

**Site:** Barley Hall

**Address:** 2 Coffee Yard, Off Stonegate, York YO1 8AR

**Contact:** Reservations team- 01904615505 or email [schools@yorkat.co.uk](mailto:schools@yorkat.co.uk)

**COVID-19 Procedures:** Following government guidance, we have introduced a number of new measures to keep visitors to Barley Hall safe, including restricting the number of people in the attraction, ensuring social distancing and adding extra cleaning and hygiene precautions for visitors, staff and volunteers.

Our procedures have gained the 'Good to Go' certification from Visit England, so visitors can be assured that we have followed government and industry COVID-19 guidelines. Our website offers further information on these measures, under [Social distancing and safety](#), but we require all schools intending on visiting the attractions to make use of our [COVID-19 Advice for Visiting Schools document](#), which contains important information for teachers undertaking a school trip with us. Further references to our new COVID-19 procedures occur in green text throughout this document.

**Access:** Unfortunately due to the structure of this historic building, wheelchair access is extremely limited. The ground floor can only be accessed by people who are wheelchair users via ramps over thresholds. There are steep stairs and high thresholds throughout. If you have particular requirements you would like to discuss with us please contact our Reservations team. You can learn more about our access provision at Barley Hall [here](#).

**Opening Hours and Times:** All opening times can be found on our website [here](#). A school tour lasts for approximately 1 hour. Admission slots are offered every 20 minutes and will be reserved solely for the entry of the school group as part of your booking.

To aid social distancing, the capacity for the number of school groups admitted in a day has been reduced, allowing for school groups visiting the attraction to maintain social distancing from each other.

## Synopsis

Meet the Family in our tour of Barley Hall. This 15th-century townhouse comes to life as you are led through the private and public spaces of the Lord Mayor of York's family home by our costumed guides.

As you explore the house you will learn about the building materials used in its construction, the functions of the different rooms and the divisions in society between the rich and the poor that are at play during the late medieval and early Tudor periods. The roles of the servants in the smaller, darker and more functional rooms is contrasted with the splendour of the Great Hall and the private quarters where the Snawsell family would have lived a more luxurious life.

*Please be aware that the content of our attractions includes human remains, and briefly touches on sensitive topics such as death, illness, injury, and slavery, although these topics are not the major focus of any schools offer, unless otherwise stated.*



## On Booking

**Barley Hall Visits:** Use the information provided on our [Education](#) webpages to choose which activities you wish to book and to view our [pricing](#). Schools admissions prices include a tour of Barley Hall with one of our costumed guides. You should also decide if you want to book a joint visit with another of our attractions; we offer discounted tickets for joint visits.

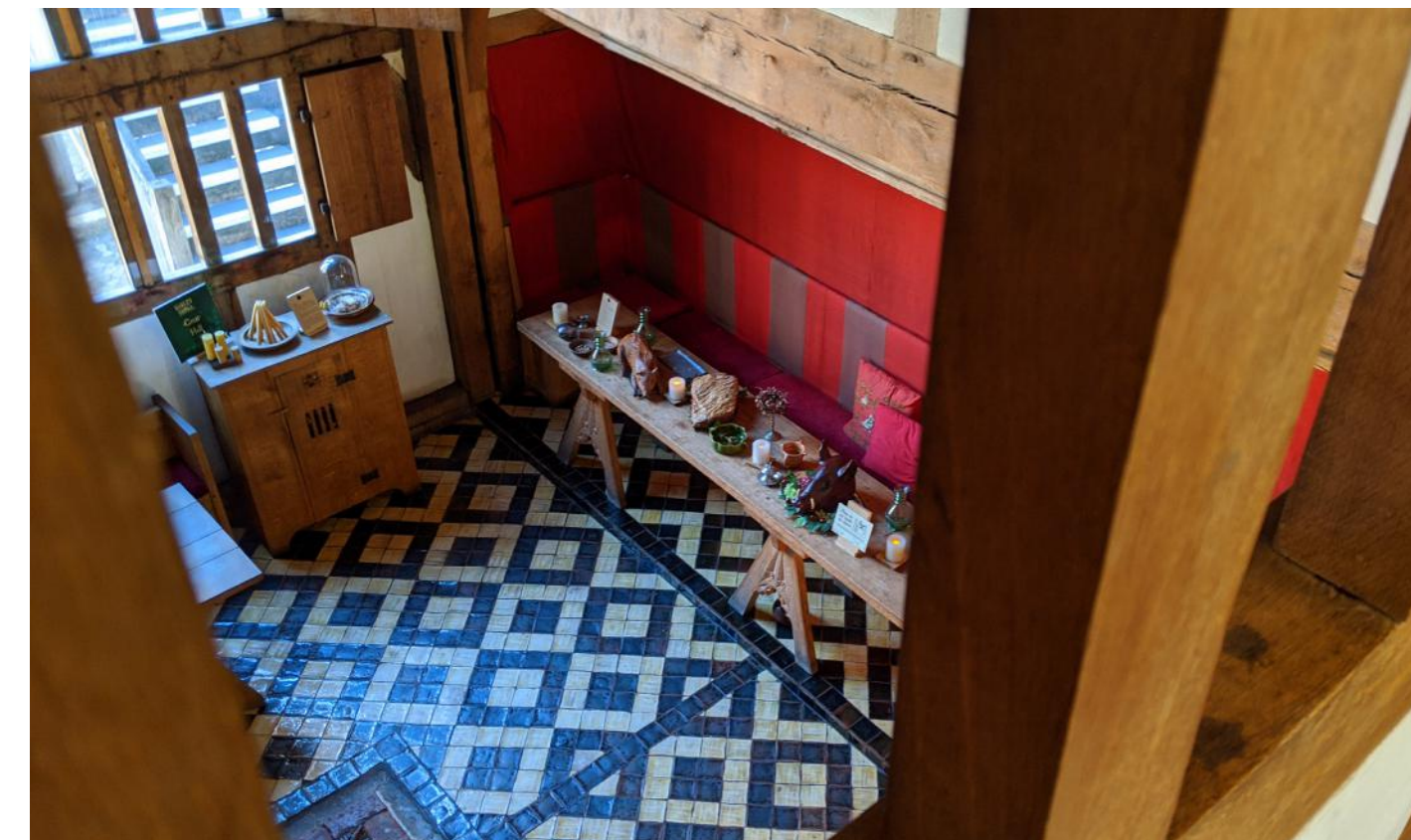
**Workshops:** Tudor and medieval-themed workshops are available as an extension to your tour experience; more information about the topics on offer can be found online.

**Lunches:** If you require a Lunch Room please ask our Reservations team to book the lunch facilities available at Barley Hall for no extra cost.

Our current COVID-19 procedures require lunches to be eaten in our School Room, which can accommodate groups of 15 children and 3 adults any one time. If you would like to book lunch facilities for a large group, you will be offered the lunch space in multiple shifts around your other activities.

**Placing a booking:** Contact our Reservations team at [schools@yorkat.co.uk](mailto:schools@yorkat.co.uk) or on 01904 615505 to place a booking. Make sure you give us your preferred dates for your visit ready to check for availability, and let us know how many children you are booking for. If you are making an enquiry about a session, please let us know the age of your pupils and any special education needs they might have so we can tailor your package to your requirements.

[Further advice on how to place a booking is provided at the end of the document in our handy step-by-step guide.](#)





## How to Find Us

### How to reach York

#### By Rail

From York Railway Station – 15 minutes' walk to DIG and 10 minutes' walk to JORVIK & Barley Hall.

#### By Road

Coach Parking: St George 's Fields Coach Park Union Terrace Please note: coaches are not allowed inside the city walls.

All of our attractions are located within York city centre, but remember to allow time in your schedule for the short walks between your chosen attractions. While some routes may be largely pedestrianised, please be aware that walks across the city may involve several road crossings and narrow pavements. We highly recommend arranging a complimentary familiarisation visit for up to 2 group leaders if you have not visited us before. Familiarisation visits can be arranged once your booking has been confirmed.



Click the address below for  
Google Maps location.

[Barley Hall, 2 Coffee  
Yard, York YO1 8AR](#)



## On Visiting

Before embarking on your trip, you must follow the guidance provided in the [COVID-19 Advice for Visiting Schools](#) document, including making use of our schools visit briefing video which will give you additional guidance on the procedures that will be in place when you visit.

**Arrival:** You will be provided with a set entry time for each of the groups you have booked to visit Barley Hall. Each group will need to arrive no earlier than 10 minutes before your scheduled entry time. Make yourself known to the staff members positioned on the admissions desk, who will ask your group to line up along the side of the building in the courtyard. Your guide will come out to greet your group outside (unless in cases of bad weather), and provide a short Health and Safety briefing for moving around the Hall.

If you are going to be late, please notify our Reservations team as soon as possible before arrival so we can try to make arrangements to accommodate late entry for your group. Please note that if your group is late we may have to cut down or remove activities in order for you to keep to your schedule.

As you enter the attraction, a hand-held thermal sensor used from a distance by staff will detect if any member of your school party has a raised temperature. If a member of your party is found to have a persistent elevated temperature your group will not be permitted to enter the attraction.

**Bags:** Storage baskets for coats and bags are available. These are not secured or supervised, and are for use while on-site only.

**Toilets:** Single male and female toilets are available and we recommend you visit the facilities in small groups before or between your activities. There is no accessible toilet.

**Gift Shop:** Due to the restricted space, we are offering controlled access to our shops and limitations on the number of students using them at one time. If you want to visit the gift shop on your visit, please let us know at time of booking so that your party has the time in their schedule to visit the shop in smaller groups.

To save time, you can also pre-order souvenirs by reserving our Souvenir Packs as part of your booking. These can then be paid for and collected from the shop when exiting. Visit our [webpages](#) to learn more about Souvenir Packs.

**Tour Experience:** A tour of Barley Hall comprises a 45-minute guided experience of the ground and first floors of the house. Pupils will be shown around the different dressed rooms in the Hall and asked to look for features that indicate their purpose and status. They will be engaged in short-form role-play activities at different stages of the tour, taking on the roles of servants or the family who once lived in the Hall and carrying out their daily activities.

The schools experience currently on offer at Barley Hall has been amended to reflect that we are currently not offering any artefact handling opportunities due to our COVID-19 procedures. Hand gel stations are available to use at regular intervals throughout the attraction, and necessary touch points are minimal, such as handrails, seating and toilet facilities.



## 1 PLAN YOUR BOOKING

Read through the Education pages on the Barley Hall website ([www.barleyhall.co.uk/education](http://www.barleyhall.co.uk/education)) to see our Attractions and Workshop options and further booking information. Joint tickets can make your visit and workshops considerably cheaper so our Reservations team would be happy to create a quote for your visit.

**Please note: to avoid disappointment please aim to book your visit at least 6 weeks in advance.**

### Your contact details:

School name and address

Name of Lead Teacher

Contact number

Contact email

### Your Visit:

Which attraction(s) you would like to visit?

JORVIK   DIG   Barley Hall

Preferred date(s):  Alternative date(s):

### Extras:

Workshop:

Lunch Space: Yes   No

### Your Group:

How many children, teachers and carers will be in your group?

Do you need to book wheelchair access at JORVIK? Yes   No

Does your group have any special Educational or other Access needs?

*Please note coaches are not allowed inside York's city walls. St George's Field and Union Terrace are the only designated Coach Parks. Remember to allow time in your schedule for the short walks between your chosen attractions*

## 2 CONTACT US

Contact our Reservations Team on 01904 6155505 or email [schools@yorkat.co.uk](mailto:schools@yorkat.co.uk) to enquire about a booking, providing the information needed in the box opposite. If you wish, you can download this pdf and open it on your computer, fill out the fields in the box above and then save the pdf (press CTRL+S or CMD+S to Save, editing the name of the document to include your school name as an extension) to send to us at the above address as an email attachment.

Remember to book any extras to make your visit run smoothly. Let our Reservations team know if you want to reserve a lunch space or pre-order Souvenir Packs.

## 3 CONFIRM YOUR BOOKING

Our Reservations team will offer you a schedule based on your requirements. **Please note that this does not represent a booking at this stage.**

If you would like to book this schedule, please let us know **within 3 working days**. After those 3 days, the proposed schedule will no longer be valid and you will need to make a new enquiry. Please have full payment details ready at this stage so that we can record them on our bookings system.

## 4 CHECK & RETURN YOUR CONFIRMATION PAPERWORK

Once you have confirmed you would like to book, our Reservations team will send you confirmation paperwork detailing your visit schedule and final pricing. Check the details are correct and sign the form. Return the form to us via email to [schools@yorkat.co.uk](mailto:schools@yorkat.co.uk) or posted to: **Reservations Department, JORVIK Viking Centre, 15-17 Coppergate, York, YO1 9WT.**

We will also ask you to confirm that you have read and understood our COVID-19 Advice for Visiting Schools requirements and procedures.

## 5 BOOK A FREE FAMILIARISATION VISIT

Ask our Reservations team to organise a teacher familiarisation visit to allow you and your colleagues to tour the attractions free of charge. Our Visitor Operations staff will be happy to answer any questions, and you can familiarise yourself with the locations of our workshops and facilities.

## 6 ENJOY YOUR VISIT

Countdown to the big day and enjoy your session!

Follow the guidance in these Teachers' Notes and our COVID-19 Advice for Visiting Schools document to best prepare your group for their visit.

We hope that you will find organising your visit well in advance will give you peace of mind and allow your class to have a great educational experience with The JORVIK Group.

## 7 HOW DID WE DO?

Remember to fill in an Evaluation Form to let us know how your visit was or contact us at [schools@yorkat.co.uk](mailto:schools@yorkat.co.uk) to pass on your feedback.